

ShyLynn Ranch

THE FIRST ANNUAL INSULATORS, PHONES & RELATED COLLECTIBLES SHOW



THURSDAY MAY 29 - SUNDAY JUNE 1, 2025

Main Event: Saturday, May 31st



EVENT HIGHLIGHTS:

- 6000SQ FT INDOOR EVENTS BARN.
- 8FT TABLES & CHAIRS INCLUDED.
- *Must contact Aidan to reserve a 'Sellers' table.
- FREE LUNCH (Hot dogs, chili, salads, sides & desserts, yum!)
- FREE COFFEE, TEA, ICED TEA & LEMONADE offered throughout the entire day.
- FREE CONTINENTAL BREAKFAST on Sunday.

**PLEASE RSVP WHETHER ATTENDING OR SELLING
SO WE CAN RESERVE ENOUGH FOOD FOR
EVERYONE.**

A donation jar for food and beverages will be available to help cover costs, donations are greatly appreciated.

EVENT ORGANIZER:

Aidan Morgan

Cell: 1 (250) 212-8573

Landline: 1 (250) 833-0156

aidan1m@hotmail.com

**ALL ATTENDEES (GUESTS OR SELLERS)
MUST RSVP WITH AIDAN PLEASE.**

LOCATION:

ShyLynn Ranch

2529 Yankee Flats Road,
Salmon Arm, BC, Canada

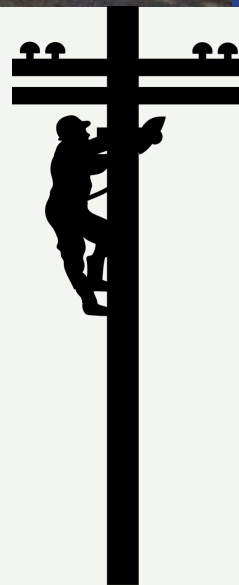
website: www.shylynnranch.ca

CAMPING DETAILS



CAMPING

- Camping is FREE
- No need to reserve a site, we won't run out.
- Sites are DRY (un-serviced).
- Water fill-up available as you turn into the campground.
- Flush washrooms, outhouses & shower house available.
- Propane fire pits welcome (wood fires banned).
- Guests can arrive as early as Thursday afternoon and are welcome to stay through until Sunday afternoon.
- Pets are welcome but must be on leash at all times please.
- The campground has its own communal barn that you're welcome to use anytime. It features a fridge, commercial sink, food prep tables, as well as seating for up to 80 people with room for more.



More details can be found on the [CAMPING](http://www.shylynnranch.ca) page at www.shylynnranch.ca

RV RENTALS:

Would you like to stay on-site for the weekend but don't have an RV? The Rental companies will bring it here, set it all up before your arrival, and pick it up when done.

We are simply giving you this information, to reserve an RV, please contact the company directly.

Shuswap Holiday RV Rentals

(250)-804-8678

www.shuswapholidayrvrentals.com

RV Adventurez 1-800-462-9958

info@rvadventurez.ca

www.rvadventurez.ca

New Horizon RV Rentals

(250)545-3238

www.newhorizonrvrentals.com

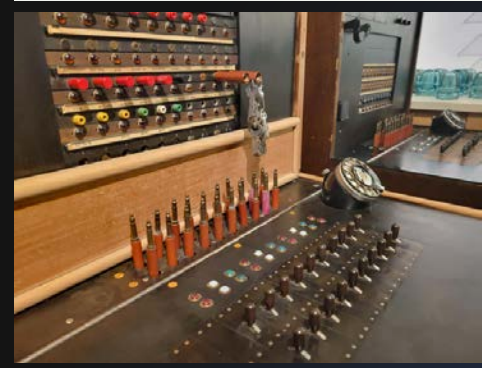
Into the Woods RV Rentals

778-863-8488

info@intothewoodsrvrentals.ca

DIRECTIONS

IF USING A GPS IT SHOULD PICK UP 'SHYLYNN RANCH'. IF NOT, THE ADDRESS IS:
2529 YANKEE FLATS ROAD, SALMON ARM, BC, V1E 3K6



The two closest major airports are in Kamloops & Kelowna.

DIRECTIONS FROM KAMLOOPS

1. Take Hwy 1 East towards Salmon Arm/Vernon
2. Take the exit for Hwy BC-97 S to Vernon
3. After about 62km turn left on Salmon River Road towards Salmon Arm
4. Go 2km and turn left up the hill onto Yankee Flats Road (Log building on right and a set of mailboxes on left)
5. Go approx 6km and you will see our sign on the right.

DIRECTIONS FROM KELOWNA

1. Take Hwy BC-97N through Kelowna
2. Continue on same HWY through Lake Country, Oyama, and Vernon.
3. As you're leaving Vernon, take the exit for Hwy BC-97 N
4. After about 20km turn right on Salmon River Road
5. Go 2km and turn left up the hill onto Yankee Flats Road
6. Go approx 6km and you will see our sign on the right.

DIRECTIONS FROM SALMON ARM (Ranch is about 25 minutes from Salmon Arm)

1. Leave Salmon Arm following Hwy 1 towards Chase/Kamloops
2. Take exit for Silver Creek
3. Follow first roundabout to go under Hwy 1
4. Exit second roundabout for 10 Ave SW/Silver Creek
5. Stay on main road through 5 90 degree turns
6. 2 km past the Silver Creek General Store turn right onto Yankee Flats Road
7. Go 7 km and you will see the Ranch sign on you left.