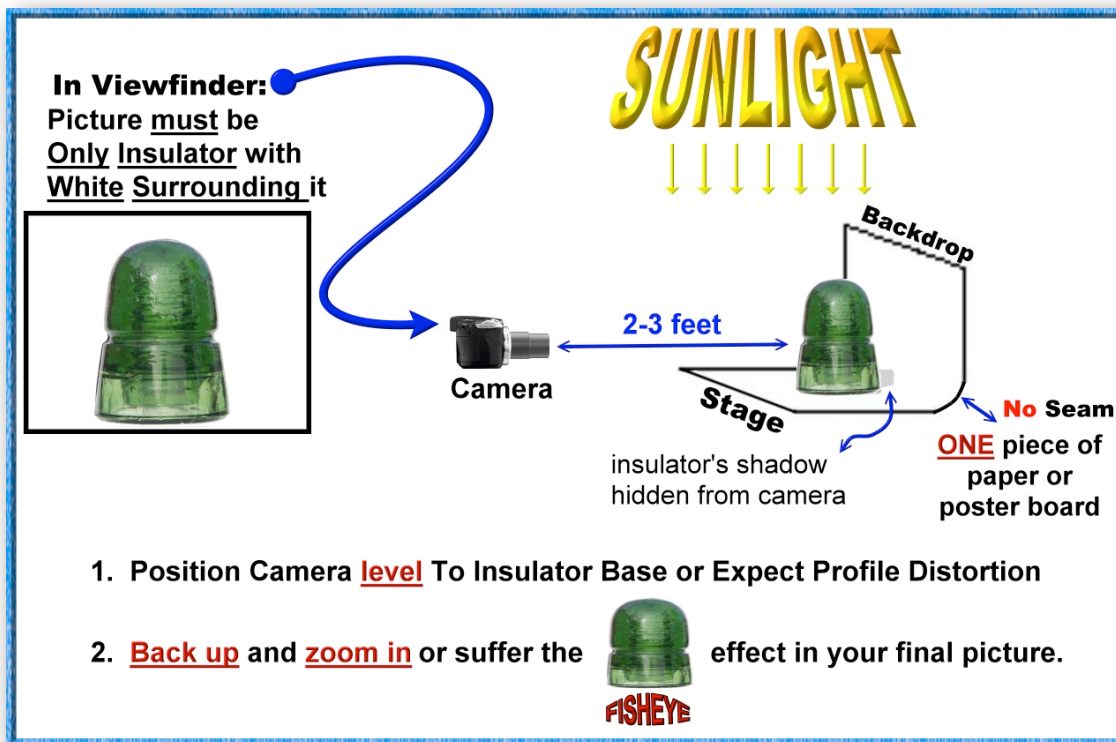




Apply flat black spray paint to the embossed area otherwise glare on the glass hides important details. A cotton ball with fingernail polish remover (acetone) applied after taking the picture easily wipes away the paint (and might clean some hidden dirt you did not know was there!). The longer you wait to clean it though, the more effort it will take. Remember, most insulators were covered with black train soot for countless years while in service, yet when cleaned show no trace of their former black coating. Paint cannot dissolve or harm glass.

Q2 How do I take pictures showing the color of my CREB (sunlight)?

See the following diagram. Note the process is extremely simple, but **every detail** must be carefully attended to. The author has shared this technique with many people, yet has been surprised by how few of the resulting pictures submitted were of ONLY the insulator with ONLY white surrounding it. Many submitted pictures also were shot at a downward angle, making crown-type determination impossible.



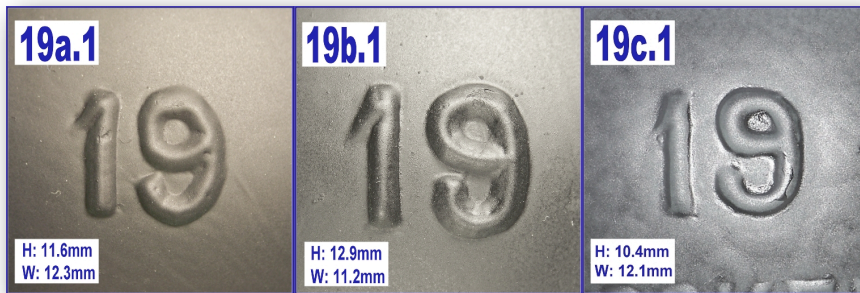
SN19 Introductory Notes

There are two sets of SN19s:

1. **The Normal 19s:** original, lightly engraved 19s including 19a-19c.



2. **The Bold 19s:** boldly engraved 19(19) molds made by hiding 19a-19c and respectively assigned 19a.1, 19b.1, and 19c.1



19a (F) 19 / (Arc) W. BROOKFIELD / 45 CLIFF S^I / N.Y.

(R) blank

EIN: [230]

A. SN Appearance:

1. **Orientation:** normal
2. **Unique Physical Features:** The 9 is shorter than the 1.

B. Embossing Size: ME

C. Unique embossing characteristics:

- **FC:**

1. The space between 45 and CLIFF is smaller than the space between CLIFF and ST.
2. The underscore in S^I is on the same baseline as the S.
3. The top loop of the S in ST is almost closed like the S-8 molds.

D. Differences from price guide's closest listing of [230]: none

E. Differences From Similar SNVs:

1. The inside of the bottom curve of the 9 in SN19a is not flat bottomed like SN19b.
2. The area inside the bottom curve of the 9 in SN19a is much wider than that of 19c.
2. The bottom curve of the 9 in SN19a is wide open, whereas 19c's is closer to touching its upper loop.

F. Dome Characteristics: Normal Crown

G. Color: aqua

H. Other notes:

1. **Nickname:** This is an S-8 Mold.
2. **Mold Prior/Subsequent Usage:** 19a => 19a.1 => 18a => 18a.1
- 19a => 19a.1 by emboldening the SN to make 19a.1.
3. **Miscellaneous:** SN19a is one of the few molds which matches an EIN perfectly.



◆◆◆ ◆◆◆
III. CREB BASICS
History & Patents

BROOKFIELD HISTORY

Brooklyn, NY 1864-1912

Bushwick Glass Works:

(also known as "Brookfield Glass Company")

Voluntary Dissolution 1915

(CREB production ~1882-1897?)

PATENT DATES (IF) USED:

Jan. 25th 1870

Make Pinhole

Then Thread It

G1 CREBS

Nov. 13th 1883

Double Petticoat

...

Feb, 12TH 1884

Beehive Shape

G1 - G4

CREBS

Brookfield makes "...three-fourths of the telegraph insulators used in this country..." (NYT Feb. 18, 1886)

(SKEB production late 1880s-1906)

◆ ◆ ◆ ◆ ◆

VIII. 1907 Brooklyn, New York Brookfield Maps

1907 *Bushwick Glassworks Floor Plan*

Although this is a 1907 map, and many modifications to the plant were made from the first days of CREB145 production, this is the earliest detailed map found to date. Various references in the history section of this book can be located on this map. An 1886 map from the Robertson's Atlas City of Brooklyn with much less detail can be found at <http://www.wardmaps.com/viewasset.php?aid=1079> (accessed April 2015)

This is a hand copied, digitally restored map of the Brookfield Glass Works in Brooklyn, New York, from the original 1907 Sanborn Map Company Atlas of Brooklyn Vol. 9, Plate No. 32 and can be found: <http://digitalcollections.nyp.org/items/7b0423d7-c2eb-d6b2-e040-e00a18066b7d> courtesy of the New York Public Library Digital Collections website. See the Bibliography for full reference.

